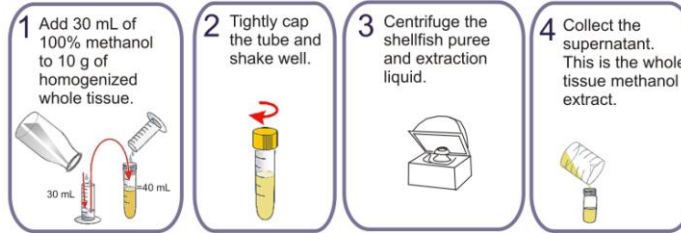


Extraction is a process whereby the prepared shellfish tissue is converted into liquid containing released toxins.

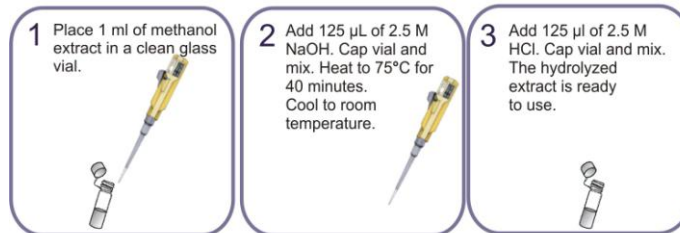
Methanol Extraction and Hydrolysis Method

Extraction:



Hydrolysis:

DSP toxins can occur as lipid derivatives that are not detected. Alkaline hydrolysis will liberate okadaic acid and its analogues DTX1 and DTX2.



Equipment required to perform the Extraction and Hydrolysis:

- Graduated cylinder
- Centrifuge
- Glass Vials
- Pipettes and tips
- Heating block

Solutions required to perform the Extraction and Hydrolysis:

- 100% Methanol
- 2.5 M NaOH
- 2.5 M HCl

This extraction method can be used with the DSP Rapid tests.

Cleaning Up

Clean all equipment used in 5% household bleach and rinse well in tap water before re-using with another sample to avoid cross contamination.